



Plate 1. Fruiting culture of *Agrocybe aegerita*, the Black Poplar Mushroom.

Plate 2. Fruiting culture of *Flammulina velutipes*, Enokitake. (Top right.)

Plate 3. Fruiting culture of *Ganoderma lucidum*, Reishi or Ling Chi. (Middle left.)

Plate 4. Progressive development of the mycelium of *Morchella angusticeps*, the Black Morel.

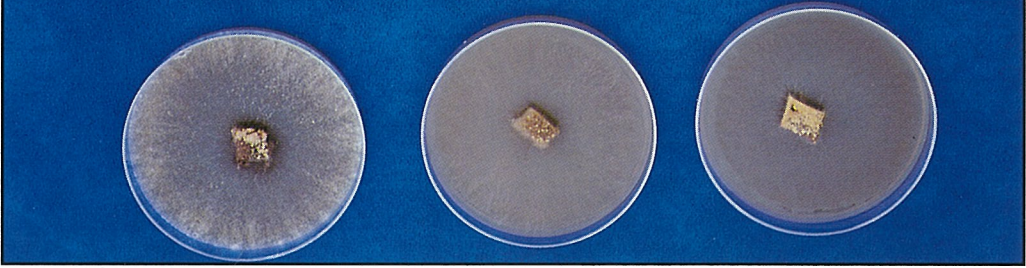




Plate 5. *Agarocybe aegerita*, the Black Poplar Mushroom or Yanagi-matsutake.

Plate 6. *Flammulina velutipes*, the Winter Mushroom or Enokitake.

